



# Landmarks

## 2005: Another Productive Year *By Jack Smiley, SMLC President*

The year 2005 turned out to be another remarkable year for the Conservancy. We made some significant strides in organizational development, and we also continued our great success at preserving land.

Perhaps our most noteworthy accomplishment was moving our office, at the end of July, from Ann Arbor to the Conservancy Farm in Superior Township. For several years, we enjoyed a small “starter office” at the NEW Center on North Main Street, with a picturesque view overlooking the Huron River. We very much appreciated the nonprofit contacts and collegial atmosphere at the NEW Center, but moving our office to the farm really puts us on the map—both literally and figuratively. **If you haven’t yet visited our historic farmstead, please make plans to do so!**

In conjunction with our move, the Conservancy has experienced an evolution in staffing. We regretfully accepted Josephine Rood’s resignation earlier this year as Office Manager, but **Scott Tyrrell**—our Volunteer and Stewardship Coordinator—stepped up to take over the responsibilities temporarily. In September, we hired **Wendy Pellerito** to be our new part-time Office Manager. We had looked far and wide for a suitable person to fill the position, but we found her living right next door to the farm. Wendy brings a wealth of talent to the Conservancy, as well as a welcoming smile and a passion for land conservation. She and her husband, Tom, were grateful (and elated!) when the Conservancy purchased the land surrounding their house. We are now grateful that Wendy will be helping us to fulfill our mission of land conservation.

Also in September, the Board of Directors made Scott Tyrrell’s job a permanent full-time position. Scott is charged with coordinating volunteers and overseeing the management of our many nature preserves and conservation easements. He also has wonderful technical skills and he works on both our web site and all computer issues. Scott has made terrific progress in getting more people involved in the Conservancy. Please make sure to call him if you’d like to help out. We are fortunate to have people working for us who are very talented and who care deeply about the work of the Conservancy.

*Year in review continued on 2*

### LeFurge Woods Campfires

**Fun, friends, and fireflies under the full moon**  
*By Doug Cowherd*

Imagine, thirty people sitting around the campfire, high on a hillside overlooking several hundred acres of gorgeous meadows, woods, ponds, and wetlands. The stars come out, one by one. Later the full moon rises over the distant trees.

It’s a LeFurge Woods Full Moon Campfire. Every month when the moon is full, the Southeast Michigan Land Conservancy hosts this event at their spectacular nature preserve in Superior Township, just east of Ann Arbor.

The scene is mostly adults of all ages, but a few parents attend with their kids. My six-year old daughter, Marianne, absolutely adores LeFurge campfires. She and her “campfire pals” love to roast marshmallows, make s’mores, catch lightning bugs, and listen to the songs of frogs and crickets.

The kids also enjoy hiking the trails that wind through the tall meadow grass, especially after night falls, when they can use their flashlights.

Older folks drink a beer, roast corn, and eat whatever shows up on the food table. There’s pleasant talk with welcoming people who’ve come from as far as Detroit and Jackson to enjoy this special night at this special place.

*Campfires continued on 2*

#### Inside:

Community Organic Garden grows in 2005 . . . . .	3
Live a Legacy, Leave a Legacy . . . . .	5
Prairie creation project. . . . .	7

**Year in review** *continued from 1*

During 2005, we initiated a number of new land protection projects. While it oftentimes takes years for projects to come to fruition, our most promising projects in the near term include a 76-acre parcel near Selfridge Air Base in Macomb County, and a 152-acre farm adjacent to our 242-acre Morris-Reichert Nature Preserve in Livingston County. We should be able to announce details of these projects early next year. We also have continued our involvement in Humbug Marsh, now that it has been protected, and are looking at ways to protect Sibley Prairie—the most exceptional, and threatened, lakeplain prairie habitat in Michigan. The Conservancy has also played an instrumental role in the implementation of the Ann Arbor Greenbelt proposal. We hope that our involvement leads to numerous effective land preservation projects around the City.

Most importantly, in 2005, we were able to pay off the Land Contract to the farm so that we now hold the deed to the property! The 143-acre farm acquisition was our most ambitious project to date. Coupled with the purchase of 20-acres immediately to the north, we paid over \$1.1 million to protect these properties. In relatively short order, we have paid off most of the loans which enabled us to make a timely purchase. We now owe “only” \$290,000, but we have a target of paying this amount off by the end of next year.

The Conservancy continued our tradition of hosting a variety of public nature tours and events, including trips to Springhill Nature Preserve, Humbug Marsh, and Sibley Prairie, to name a few. Our most popular events were our Full Moon Campfires at LeFurge Woods. (Make sure to read the enclosed article by Doug Cowherd.) We also held a very enjoyable Summer Picnic at the Conservancy Farm. Plan to join us for some of these events next year.

A variety of projects were completed this year at the farm, from revamping the electrical service to installing a new well. Volunteers contributed greatly towards painting the house and barn, yard work, and removing invasive species. A special new feature at the farm is our Community Organic Garden. A dozen people took part in this growing venture, and all were very pleased with their abundance of produce. Since agricultural land preservation begins with an understanding and appreciation of farm land, we hope to get more people in touch with the land, while demonstrating that sustainable agriculture is compatible with the preservation of natural habitat.

These are just a few of the many activities we have undertaken during this past year. We are grateful to the many people who volunteered their time, talents and, yes, money, to the Conservancy in 2005. Our success is wholly dependent upon you. Can we count on your support for next year? We look forward to an exciting and productive 2006!

**Campfires** *continued from 1*

You never know what will happen around the campfire. I’ve gazed at the moon and Mars through a telescope, sung with guitar players, and examined cicadas with bug experts.

Much to her delight, Marianne and I always stay up “way too late” on our campfire excursions to LeFurge Woods. Thrilled and exhausted she falls silent, then asleep, in the car on the way home.

These nights enjoying the wonders of nature with my daughter remind me of a compelling reason to preserve open space near where people live, rather than just in spectacular, but distant, places: kids deserve to grow up with nature in their lives.

*Doug Cowherd is Co-chair of the Huron Valley Group of the Sierra Club. Reprinted with permission from the Sept 2004 issue of The Lookout – newsletter of the Huron Valley Group of the Sierra Club.*

**LeFurge Woods Full Moon Campfires - you are invited!**

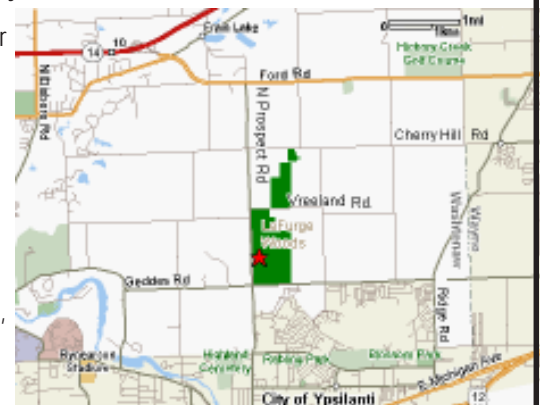
Campfires happen on Saturday nights closest to the full moon. All dates planned for 2005 have passed, however, they will resume in May 2006.

Many people arrive before sundown to enjoy a walk on the trails. Campfire starts shortly before dark.

Bring kids, friends, or people you barely know. Please, no pets. Bring a blanket or lawn chairs, and campfire refreshments.

Everything is free. Everyone's welcome, no membership required.

The main entrance to LeFurge Woods is on the east side of Prospect Rd., 1/2 mile north of Geddes (2 1/2 miles south of Ford Rd.). Look for the “Tours” sign sitting next to the driveway and follow it back to the parking area.



# Community Organic Garden "Gets Growing" in 2005

By Jennie Williams

With a slow start, gardeners at the Conservancy Organic Garden finished the year with a bountiful harvest. Ten gardeners turned about half an acre of soybean field into garden plots to grow veggies, herbs and all kinds of flowers – including a nice range of sunflower varieties. A few critters found their way in, and while no devastating damage occurred, a fence is being constructed to discourage future foraging. Gardeners made a donation to Food Gatherers and hope to make more regular donations next year.

All of the gardeners did a very nice job tending their plots and building the soil with compost – the key to sustainable organic gardening. Many thanks to those who helped get the Conservancy's Organic Garden going. Especially to **Gary Grosshans** for plowing the garden space in the spring; to **Marion Morris** for letting us dig into her well-composted horse manure to incorporate into the soil; to **John Schwartzberger** who delivers horse manure from local stables to help build our compost operations; to **Mary Emmett** who donated a wheel barrow and pallets; and to **Lynn Mida** who re-wired the well so we have much needed water for dry season.

Of particular note, **Andrew Bucienski** used seed saver methods to conserve plant families important to First Nation Tribes around the region. Corn from the Miami, several kinds of beans from the Potawatomi and Kickapoo, and watermelon from the Arikara tribes. His efforts could save authentic vegetables of original tribes of Southeast Michigan from being lost to the world. Andrew hopes to maintain seed integrity and looks forward to helping others share and experience this connection to our heritage.

**Upcoming Events at the Garden.** Now that the harvest is complete. We will begin organizing an educational series for organic gardening this winter. The classes will be held at the farm and cover topics like finding a seed source, starting seeds, pest management, and preserving the harvest. Contact the SMLC office to get more information about these classes.

Gardeners are collaborating on a handbook to help people understand how to take care of their plots and grow plants with an organic philosophy. And when the ground warms up again, we'll resume putting up the fence – a project that will benefit from many helping hands.



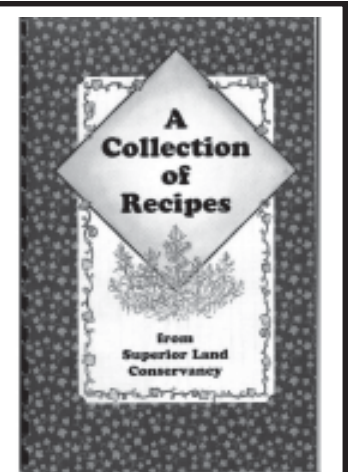
Dozens of sunflowers in the Conservancy Community Organic Garden had birds flocking in by the hundreds

Photo by Jay Schlegel

Over the winter, we hope to design a water tower and start construction in the spring. This will collect and store rainwater off the roof of the garage. In the dry days of summer, we should have water available to use in the garden. This should cut the cost of running the pump. If you have some construction or plumbing experience, we could use your help with designing and building a tower and water line out to the garden.

Next year we hope to see many more gardeners! We have plenty of room to keep growing, however, 20' x 20' plots inside the garden fence are limited. We do ask for a suggested donation of \$5-\$20 per plot for SMLC members and suggested donation of \$15-\$50 per plot for non-members. Deadline for reservations is March 31, 2006. Call or e-mail Scott and Wendy at the SMLC office to reserve your plot(s):

(734) 484-6565 smlcaa@ameritech.net



## Cooking for Conservation

*A great holiday gift idea!*  
As part of Superior Land Conservancy's funding, members have created a cookbook called *A Collection of Recipes*. It is a compilation of favorite dishes and helpful hints from Conservancy members and friends. The cost of the cookbook is \$7.00 per copy plus \$2.00 for mailing. You can order cookbooks by calling Marion Morris (734) 482-7414. 100% of the proceeds will be used for further preservation of land in Superior Township.

# LeFurge Woods Nature Preserve sign highlights County/Conservancy partnership

By Richard Kent, SMLC Board Member

Washtenaw County Parks and Recreation Commission (WCPARC) recently installed a sign on Vreeland Road in Superior Township at the LeFurge Woods Nature Preserve. Adjacent to the trail leading into the high quality woods, the sign recognizes the collaboration to expand this preserve between Southeast Michigan Land Conservancy (SMLC) and Washtenaw County Natural Areas Preservation Program (NAPP). *Washtenaw County holds a conservation easement on 64 acres at this location out of a total of 325 acres the Land Conservancy owned in 2003. 99 acres of land were added in two purchases by SMLC in 2004 to increase the size of the preserve to 424 acres to date. The cost of manufacturing the tan and brown recycled plastic sign was shared by WCPARC and SMLC.*

Stretching from Geddes Road north to Cherry Hill Road this two mile corridor is an important greenway for wildlife and human enjoyment. Located between expanding Detroit and Ann Arbor this land is an important landscape buffer. Recognizing its significance, the SMLC has been purchasing land at this location since 1993 when the initial purchase of 131 acres was made. In 2003, when 64 more acres became available, SMLC was able to obtain assistance to purchase the land



from Washtenaw County's Natural Areas Preservation Program which was established in 2001. Washtenaw County contributed \$225,000 to purchase a conservation easement on the property thereby saving the Conservancy that amount from the full purchase price.

Both the County and Conservancy offer programs at the site which features a rich diversity of habitats: wetlands, open fields, mature woods (wet and upland). Wildflowers - some uncommon in our area - are abundant, especially in the spring. Birding opportunities are good.

For more information on the Washtenaw County NAPP or nature programs contact: Washtenaw County Parks and Recreation Commission (734) 971.6337 or [parks.ewashtenaw.org](http://parks.ewashtenaw.org)

A new sign on Vreeland Rd. welcomes hikers and passerby to the LeFurge Woods Nature Preserve. Photo by Richard Kent

## SMLC Committees

Southeast Michigan Land Conservancy has several committees. Members like you are encouraged to participate by helping explore ideas and carry out the mission of the Conservancy. The committees are:

- **Farmhouse** (1st Wed 7:00pm)
- **Organic Garden** (2nd Sat 2:00pm)
- **Membership & Development** (2nd Tue 6:30pm)
- **Superior Land Conservancy** (3rd Wed 7:30pm)
- Two committees, **Stewardship** as well as **Property Acquisition** do not currently have specified meeting times.

Each committee meets once each month at the Conservancy farm, 8383 Vreeland Rd., Superior Twp. 48198.

Check our website for more details. To verify meeting times contact Scott Tyrrell, Stewardship and Volunteer Coordinator at (734)484-6565 or [smlcstewardship@animail.net](mailto:smlcstewardship@animail.net)

## Thank You!

Southeast Michigan Land Conservancy would like to thank the following businesses for their donations of merchandise:

- **Arbor Farms Market** (Ann Arbor)
- **Morgan & York** (Ann Arbor)
- **Plymouth Orchards** (Superior Twp)
- **Whole Foods Market** (Ann Arbor)
- **Zanzibar Restaurant** (Ann Arbor)

# Live a Legacy, Leave a Legacy

As a member of the Southeast Michigan Land Conservancy, you are one of the 81.5% of Southeast Michigan residents who annually give to charity. Surprisingly, however, only 2.8% of Southeast Michigan residents leave a bequest at death.

To counter that disparity, LEAVE A LEGACY® was established as a community-based effort to encourage people from all walks of life to make gifts from their estates to the nonprofit organizations of their choice. The program encourages prospective donors to work with the charities they already support, or the estate planning professionals with whom they already have a relationship, to establish a charitable bequest or other planned gift.

One of the misconceptions about leaving a legacy is that only the wealthy can do it. The truth however, is that everyone can, no matter what your current income or assets, because planned gifts can be a lot more than money. In fact, some of the most common gifts are stocks, IRAs, cars, real estate and life insurance policies.

Charitable bequests can easily be made through a will (as well as through a revocable trust), so a first step is to prepare a will. Only 50% of those who pass away have one. Without a will, your estate may be divided contrary to your wishes or, in some cases, it may be greatly diminished by estate taxes.

A bequest may be for a specific dollar amount or for a percentage of the assets in your will. A specific bequest is the simplest form of bequest. It designates a fixed dollar amount or specific property to a beneficiary. This type of bequest is appropriate when you have an item of value (stocks or bonds, real estate, works of art, etc.) or a definite dollar amount that you wish to leave to a particular charity.

Residual or proportional bequests designate either your entire estate or a

percentage of your estate after other specific bequests are distributed. The advantage of designating a portion of your estate is that the bequest automatically adjusts in size as your estate increases or decreases over the years.

Suggested language for a bequest in a will or trust may be quite simple, such as:

I give to the Southeast Michigan Land Conservancy, a Michigan nonprofit corporation, the sum of \$ \_\_\_\_\_

or

I give to the Southeast Michigan Land Conservancy, a Michigan nonprofit corporation, all of my interest in the following described property: \_\_\_\_\_

or

I give to the Southeast Michigan Land Conservancy, a Michigan nonprofit corporation, \_\_\_\_\_ percent or all of the residue of my estate to be used as the board of directors of Southeast Michigan Land Conservancy shall determine.

You may also designate your bequest for a particular purpose. In addition to our General Fund, the Conservancy has two designated funds to which donors may earmark contributions: the Endowment Fund and the Land Acquisition Fund. Both of these funds will provide benefits year after year, and will truly enable

you to “Leave a Legacy”. For other designations, you should contact the Conservancy to first determine that the intended use is in keeping with the long-term objectives of SMLC.

Regardless of your age or personal finances, it is important to have a will to plan for the ultimate disposition of your assets. Proper planning is essential to provide for your family’s needs and to also provide for charitable works.

**Remember: You, too, can Leave A Legacy.**

## What can you do to Leave a Legacy?

1. Prepare a will. Only 50% of those who pass away have one. Without a will, you may lose control over your belongings.
2. Leave a gift in your will for the nonprofit and charitable organizations that you support. Imagine the positive impact on our community if everyone made a donation to a favorite nonprofit.
3. Leave a specific dollar amount or a percentage of the assets in your will to the nonprofit of your choice.
4. Consider using assets for your charitable gift. These include but aren't limited to: stocks, bonds, CDs, real estate, vehicles, and insurance policies. Such gifts may even provide tax savings.

## Landmarks

A newsletter published by  
**SOUTHEAST MICHIGAN  
LAND CONSERVANCY**

8383 Vreeland Road  
Superior Twp., MI 48198

(734) 484 - 6565  
smlcaa@ameritech.net  
www.landconservancy.com

### Southeast Mich. Land Conservancy BOARD OF DIRECTORS

Jack Smiley, *President*  
Rick Simek, *Vice President*  
Jennifer Fike, *Treasurer*  
Roy T. Bell  
Helen Jeter  
Richard Kent  
Valerie Malaney  
Peter Scott  
Bill Secrest  
James T. Weiner  
Marlene Wiczorek  
Sandra Zihhar

### Superior Land Conservancy (an SMLC committee) BOARD OF DIRECTORS

Marion Morris, *Chair*  
Dan Moerman, *Vice Chair*  
Bob Morningstar, *Secretary*  
Jan Berry, *Membership Secretary*  
Jeff Peelman, *Treasurer*  
Sandi Lopez  
Jan BenDor  
John Copley  
Mary Emmett  
Bill Secrest  
Diane Shute  
Jack Smiley

### Monroe County Land Conservancy (an SMLC committee) BOARD OF DIRECTORS

Pat Schoen, *Chair*  
Bonnie LaVoy, *Secretary*  
Rosie Assenmacher, *Membership Secretary*  
Hedi Kaufman  
Silvia Pinkerman  
Tom Deku  
Lucy Pentz

### SMLC STAFF

Wendy Pellerito, *Office Manager*  
Scott Tyrrell, *Stewardship &  
Volunteer Coordinator*  
Contact us at the office via info above.

## New Office Manager excited to be working at Conservancy *by Wendy Pellerito*

Hello, my name is Wendy Pellerito and I'm SMLC's new Office Manager. How did I come to know about this wonderful organization? Well, I live right next to the Conservancy farm. When the previous owners of the farm put it up for sale, I spent three years pacing the floor and staring out my window wondering what would happen to such a beautiful historic site and natural habitat. My husband, Tom, had to console me many times on this issue. The day that Marion Morris, president of Superior Land Conservancy, called to let me know that Southeast Michigan Land Conservancy had purchased the farm in order to preserve it, the news was **music to my ears!**



And the bonus for me...new friends! Before and since becoming Office Manager, I've enjoyed being in the company of other nature lovers like me who appreciate the beauty of the great outdoors. I have spent wonderful evenings at the moonlight campfires at LeFurge Woods Nature Preserve and volunteering to "whack and stack" invasive plants like Common Buckthorn at Cherry Hill Nature Preserve. I have also had the pleasure of working alongside fellow gardeners in the new community organic garden. Currently, I am on two SMLC committees so that I may continue actively volunteering.

When the SMLC Office Manager position became available, I knew this was the job for me. The best part of being on staff is helping others connect with the Conservancy. So here I am, to serve members and to protect what we all cherish: land! I would like to say "thank you" to all SMLC members for letting me be part of this important local land conservation mission. And next time you're out for a walk at LeFurge Woods, stop by the farmhouse and say 'hi'!

## 2005 volunteers keep Conservancy going

*by Scott Tyrrell, SMLC Stewardship & Volunteer Coordinator*

As the Conservancy grows so does its need for help from volunteers – people who can give time, energy and, sometimes, expertise toward the Conservancy's mission of preserving natural land, agricultural land, and places of scenic beauty. To thank everyone who gave their time, talent and energy this year would fill this whole newsletter. But here's some highlights.

Bluebirds now have a lot more options in Superior Township. **Nathaniel Dewicki**, for his Eagle Scout project, marshaled materials and helpers to build and mount 36 bluebird boxes around the farm in October. This was in addition to a dozen boxes his brother **Brandon** put up two years ago. Both now have their Eagle Scout badges – the highest rank in the Scouts – for successfully completing the projects and birds now have many more places to call home out on the preserve.

The Conservancy's community organic garden was the center of much activity this year. In addition to the composting, planting, and weeding there was a good bit of work setting up the garden. Wood chips were donated and spread out on the pathways. The gardener's are also talking about building a system for catching rainwater from the roof of the pole barn, storing it, and piping it about 200 feet out to the garden. If you have some construction experience and would like to help design and build such a system, please call our office.

Many thanks go out to the many people who spent Saturday afternoons this autumn painting the barn. Winter came along before the job was finished, so we'll have more chances to paint when the weather warms up in spring.

The old farmhouse, while in pretty good shape for an old farmhouse, still needs TLC. So lots of people helped whip the place back into shape. There's still lots of things to do, so get in touch with the farmhouse committee if you'd like to help out with decorating or maintenance.

# Prairie creation at the Conservancy farm

By Bob Morningstar, SLC Secretary

When you hear someone talking about a tall grass prairie it generally conjures up images of Native Americans or early European immigrants living out on the Great Plains. However, Michigan also had extensive prairies that stretched out along the glacial lakeplains of Lake Erie, the Detroit River, Lake St. Clair,



*Prairiescape drawing by John Copley*

Saginaw Bay and a few other portions of the state. An estimated 158,000 acres of lakeplain prairie existed in Michigan in the early 1800s, of which 80% was located in the southeast part of the state, especially in the counties of Monroe, Wayne, and St. Clair. These prairies provided unique habitat for a diverse variety of plants and animals, many now quite rare in Michigan. Most of the State's prairies have been converted to agriculture and, increasingly, development. Sadly, only a few tiny remnants exist today.

The Superior Land Conservancy (SLC) Board recently passed a resolution to work with SMLC to establish a native plant prairie at the Conservancy farm in Superior Township. The idea is quite simple. By utilizing our volunteer base, the knowledge of local experts, donations to purchase native grass and wildflower seed mixes, and the help of our local farmers, we will establish a one to two acre prairie as a demonstration project. The prairie will be used to educate local land owners. Many homes in the Township are located on 5, 10 or 20 acre parcels that were once farmed and are currently dominated by non-native invasive plant species. SLC and SMLC can use the demonstration prairie to educate Township homeowners about native landscapes.

The prairie at the farm will be an aesthetically pleasing landscape containing a variety of grasses and wildflowers that will provide a unique habitat attractive to wildlife. Some areas will be short grass prairie containing little blue stem and shorter wildflowers, while other areas will contain tall prairie grasses such as big bluestem and

Indian grass. The seed from the prairie may be harvested and sold as a fundraiser. Once we have successfully established a small prairie and learned from our mistakes, we will consider expanding it to cover a larger area.

The exact location of the prairie at the Conservancy farm has yet to be determined. Over the next several months, SLC will be working closely with the SMLC Farm Committee to identify an appropriate area that is compatible with the existing organic farm and other farming operations on site. The goal is to have a detailed plan in place by the end of winter and in time to begin work in spring 2006. Please

call Bob Morningstar at 734-998-0849 if you are interested in working on this interesting project.

*Bob Morningstar is a native landscaping design consultant and Superior Land Conservancy Secretary*

SMLC would like to thank the following members for making these donations from the Conservancy's Wish List:

- Helen Jeter – office equipment and supplies
- Carl & Kay Williams – room air conditioner
- Gary Stahle – riding lawn mower
- Kenneth McQuade – rototiller
- Martha Vicinus – snow blower and push mower

These much-needed items will help keep the farm, gardens and general maintenance of the Conservancy's preserves going for years to come.

*Thank you!*

**YES! I want to help preserve critical natural habitat in southeast Michigan by supporting Southeast Michigan Land Conservancy.**

Name \_\_\_\_\_  
Address \_\_\_\_\_  
City \_\_\_\_\_ State \_\_\_\_\_ Zip \_\_\_\_\_  
Phone ( ) \_\_\_\_\_  
Email \_\_\_\_\_

**Direct my donation:**

General Fund \$ \_\_\_\_\_  
Land Acquisition Fund \$ \_\_\_\_\_ (to be used only for purchase of land)  
Endowment Fund \$ \_\_\_\_\_  
Total enclosed \$ \_\_\_\_\_

New  
 Renewal

Make your check payable to **Southeast Michigan Land Conservancy** and mail to:

**Southeast Michigan Land Conservancy  
8383 Vreeland Rd.  
Superior Township, MI 48198**

All donations are tax deductible to the extent provided by law. We will never give or sell your personal information to any other group.

# Wish List

The Conservancy can put the following items to good use at the farm:

- GPS unit**
- Computer w/ Win 2000 or XP**
- Tractor**
- Electric generator**
- Chain saw**
- Gas weed whacker**
- Water tower**

Please contact Wendy at the office if you would like to donate any items:

(734) 484 - 6565

**Conservancy memberships make great holiday gifts!** Contact us for details



**Southeast Michigan Land Conservancy**  
8383 Vreeland Rd  
Superior Twp., MI 48198

ADDRESS SERVICE REQUESTED

Non Profit Org  
U.S. POSTAGE  
PAID  
Dearborn, MI  
PERMIT NO. 40