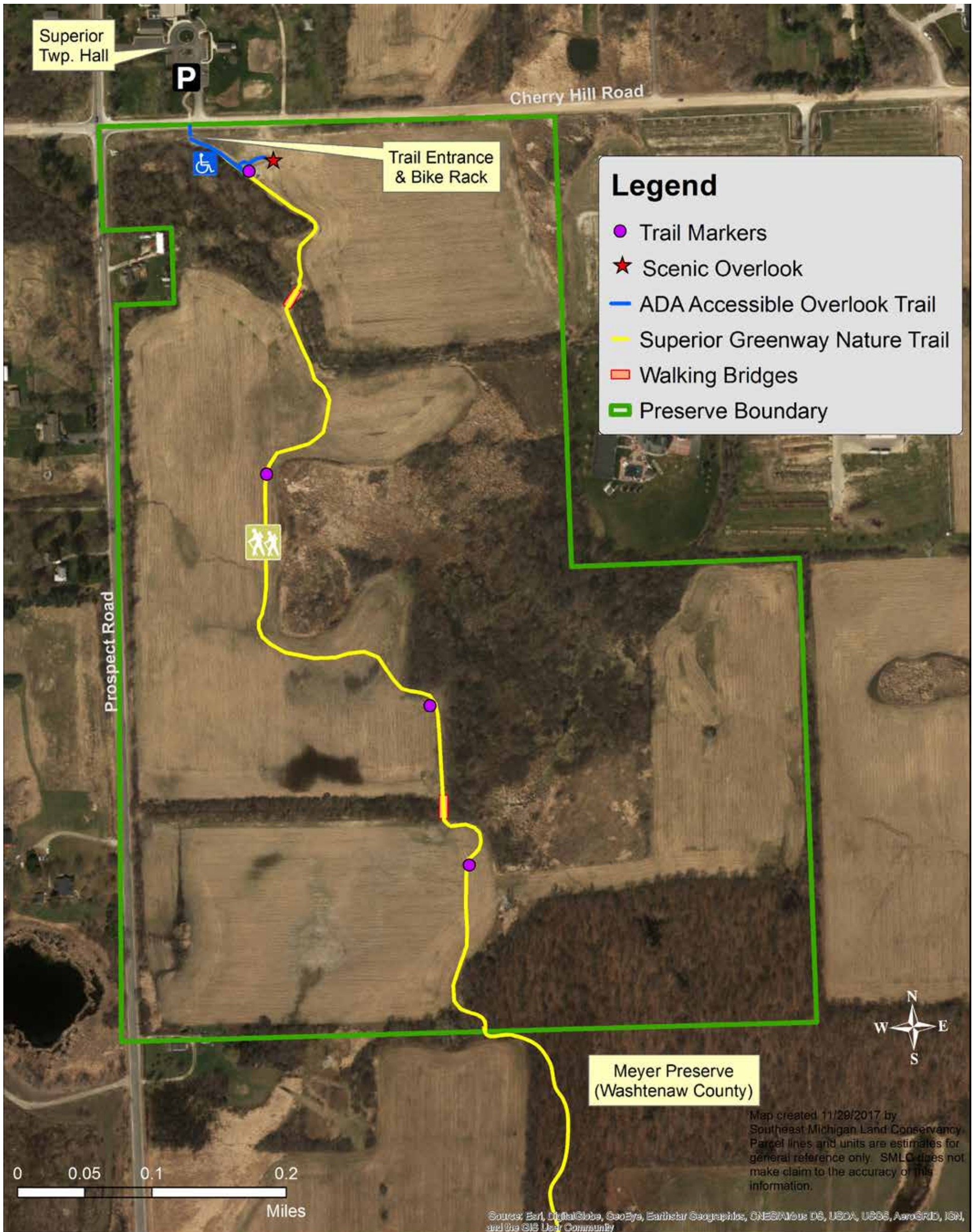




Southeast Michigan Land Conservancy

Jack R. Smiley Nature Preserve

TRAIL MAP



The Superior Greenway Nature Trail

The Superior Greenway Nature Trail meanders along restored wetlands and agricultural fields through Jack R. Smiley Nature Preserve for 0.9 miles before continuing another 0.6 miles through Meyer Nature Preserve, owned by Washtenaw County, and connecting with LeFurge Woods Nature Preserve across Vreeland Road.

